

Why 9 out of 10 patients like

HOME DELIVERY

for maintenance medication¹

BETTER
CARE
GREATER
SAVINGS
MORE
CONVENIENCE

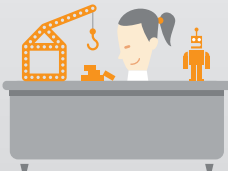
UP TO
19%
BETTER ADHERENCE
to prescribed therapy²
than through retail pharmacies



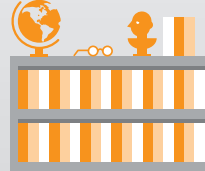
AUTOMATIC REFILLS
and prescription renewals
make it easy to have
medications on hand



Cutting-edge technology
and techniques achieve
**GREATER DISPENSING
ACCURACY**



Access to
**SPECIALIST
PHARMACISTS**
trained and experienced in the
medications used to treat
particular conditions



Wholesale
purchasing and
pharmacy
automation
achieves
**LOWER
COSTS**



**SAVE 3
MONTHLY TRIPS
TO THE RETAIL PHARMACY**
with each 90-day home delivery fill

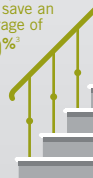


**PROTECTIVE AND
INSULATED
PACKAGING**
ensures safe
delivery of
temperature-
sensitive
drugs.



24/7 pharmacist phone
consultations from the
**COMFORT AND
PRIVACY OF HOME**

A 90-day
prescription
usually costs
less than three
30-day fills at
retail; members
can save an
average of
29%³



Express-Scripts.com
Convenient tools
for managing
prescriptions

**Free Standard
Shipping**
Express delivery
available



If everyone used home delivery,

THE U.S. COULD SAVE \$96.3 BILLION each year⁴



¹National Consumer Survey of Adults with Prescription Drug Coverage published by the Pharmaceutical Care Management Association, 2010. "Maintenance medications" refer to drugs taken over a sustained period of time to treat chronic conditions.
²Iyengar RI, Henderson RR, Visaria J, Frazee SG. Dispensing Channel and Medication Adherence: Evidence Across Three Therapy Classes. Am J Manag Care. October 2013. Patients taking high blood cholesterol medications were 19% more adherent when receiving them through home delivery pharmacies.
³Average percentage savings figure based on analysis of actual January-March 2012 claims for clients with a retail pharmacy and mail pharmacy benefit, excluding Medicare clients and clients participating in mandatory mail programs; savings may vary.
⁴Express Scripts 2011 Drug Trend Report, p. 11

